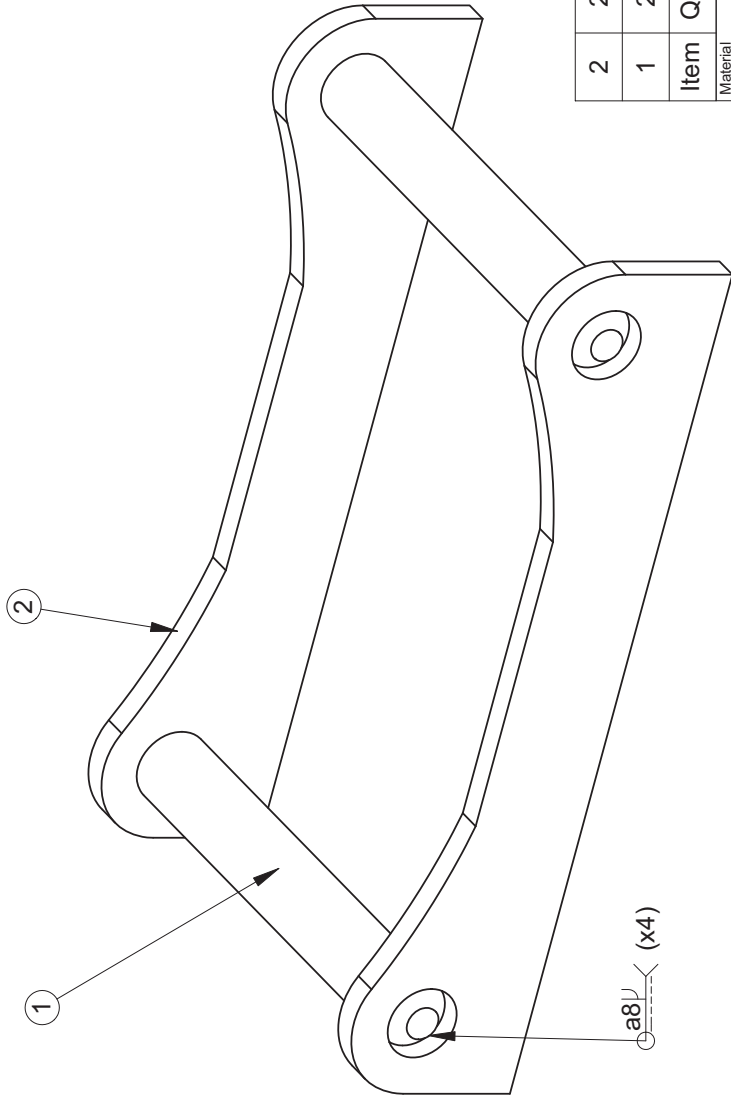
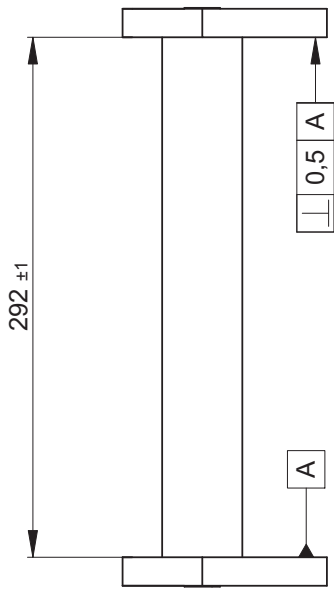
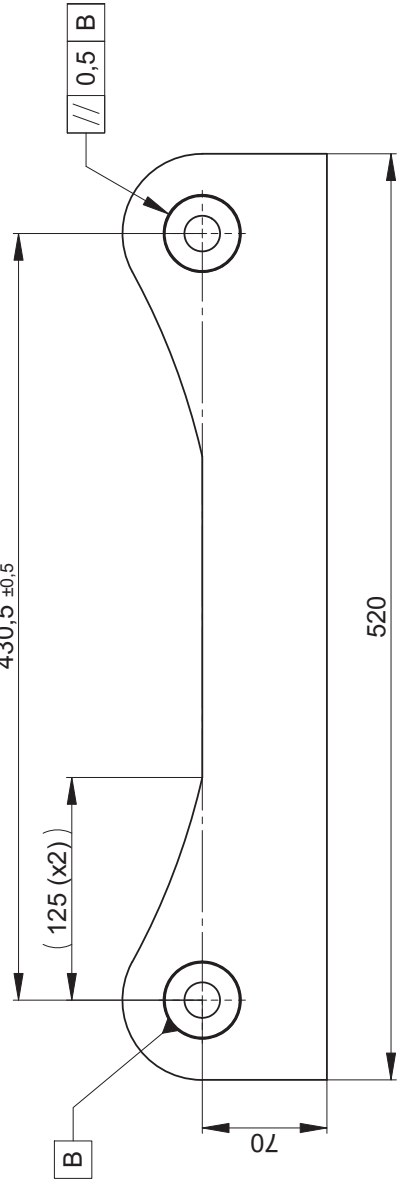
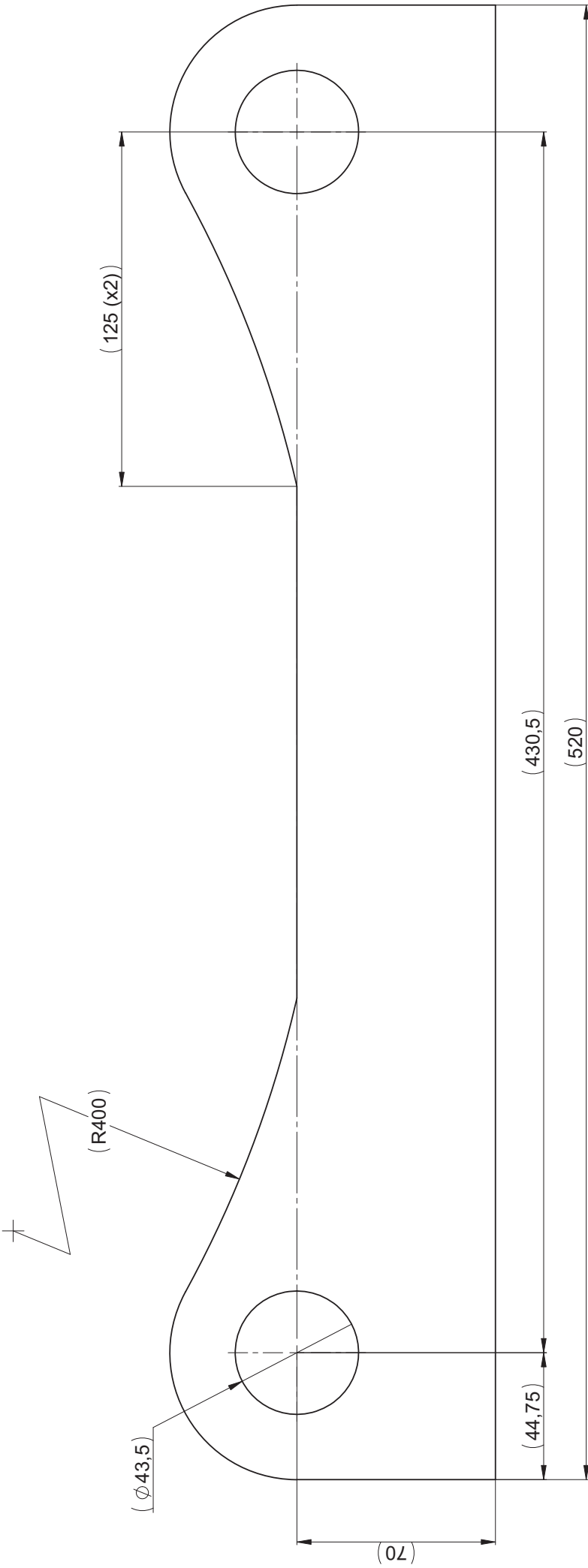


This drawing remains Steelwrist property and should not be copied without our written allowance. Nor is permitted to show or give this to a third person. Contravention will be prosecuted with the support of existing law.



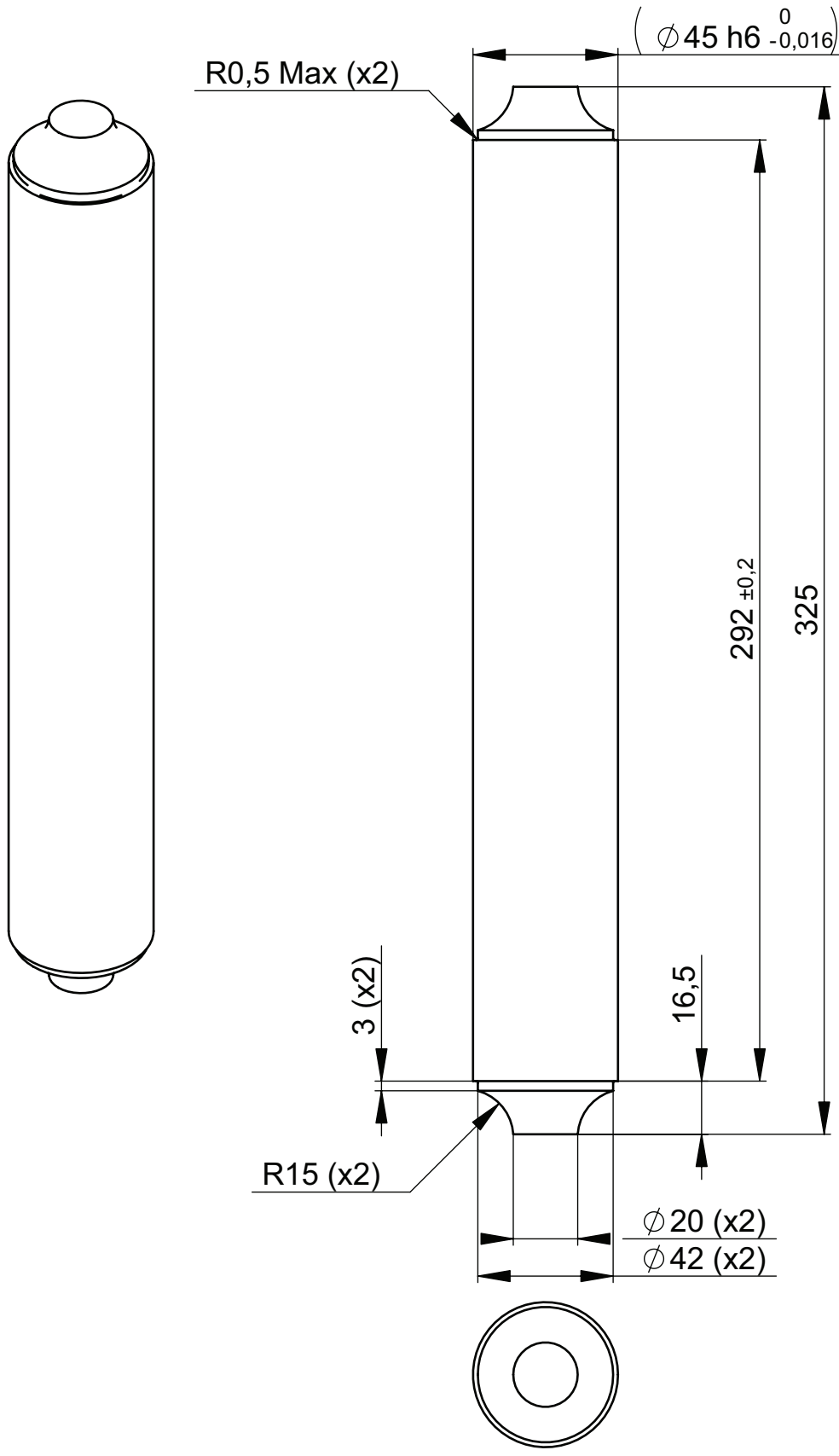
2	2	Side Plate S45	202693
1	2	Shaft S45	100424
Item	Qty	Description	Note
Material			
Surface Treatment		Proj. Method E	Scale
-			1:3
Material description, dimension		General surf. roughn.	Drawing size
Weight (kg)		General surf. 3,2	A3
18.07		All dimensions metric Sharp edges broken 0.2-0.3 Hole edge radius: max 0.3	
Description		Article no	
S45 Bucket Adaptor		General tolerances	
Drawn by cri		ISO 2768-mk	
Approved by		ISO 2768-2 K	
Date 2008-03-07		ISO 13920 CG	
Drawing number 202692		ISO 286-1: H11/h11	
Revision A		Sheet 1(1)	



This drawing remains Steelnwist property and should not be copied without our written allowance. Not a permitted to show or give this to a third person. Contravention will be prosecuted with the support of existing law.

Material	Weldox700	Prog. Method E	Scale	1:1	General tolerances
Surface Treatment		General surf. 3,2	Drawing size	A2	ISO 2768-mK
Material description, dimension	$t=16$	All dimensions metric			ISO 2768-2 K
Weight	5.23	Min. edge radius			ISO 13920 CG
		Hole edge radius			ISO 286-1:
					H11/h11
Description					
Side Plate S45					
Drawn by	ctf	Approved by		Drawing number	202693
		Drawn date	2008-03-07	Revision	A
				Sheet	1(2)

This drawing remains Steelwrist property and should not be copied without our written allowance. Nor it is permitted to show or give this to a third person. Contravention will be prosecuted with the support of existing law.



Material S355J2 (SS2142)		Proj. Method E 	Scale 1:2	General tolerances ISO 2768-mK ISO 2768-2 K ISO 13920 CG ISO 286-1: H11/h11
Surface Treatment		General surf. roughn. $3,2/\sqrt{\quad}$	Drawing size A4	
Material description, dimension $\varnothing 45 h6$ grinded shaft		Weight (kg) 3.81	All dimensions metric Sharp edges broken 0.2-0.3 Hole edge radius: max 0.3	

 STEELWRIST 	Description Shaft S45				
	Drawn by CRI	Approved by cri	Date 2006-11-07	Drawing number 100424	Revision A